

WIDEX **ALLURE™**

USER INSTRUCTIONS

THE WIDEX ALLURE™ FAMILY

ACRD1 model
ITE
(In-the-ear)



WIDEX

SOUND LIKE NO OTHER

YOUR HEARING AID

(To be filled out by the hearing care professional)

☐ Vent ☐ No vent

☐ Extraction cord

Your hearing aid programs:

PROGRAMS

☐ Universal

☐ PureSound

☐

☐

☐

The program names in the table are the default names.

Read the instructions

Carefully read the user instructions in this booklet before you start using your hearing aid. You should also read the user instructions for the charger.

Sound streaming and wireless control

The hearing aid allows sound streaming and direct wireless control from smartphones and other devices via DEX. For more help and information contact your hearing care professional or visit: www.widex.com.

The hearing aid works wirelessly with the ALLURE app. We take no responsibility if the hearing aid is used with any third party app or if the app is used with any other device. Read more about the app in the booklet.

CONTENTS

YOUR HEARING AID.....	7
Welcome.....	7
Your hearing aid at a glance.....	8
CONDITIONS FOR USE.....	9
Indications for use.....	9
Hearing aids with rechargeable batteries.....	9
Intended purpose/Intended use.....	9
Charging.....	10
Use time and charging time.....	11
Operating and charging conditions.....	12
Storage and transport conditions.....	13
DAILY USE.....	15
Turning the hearing aid on and off.....	15
Putting on and removing the hearing aid.....	16
Putting on the hearing aid.....	16
CUSTOMIZATION.....	18
Programs.....	18
Sound and program adjustment.....	19
PAIRING YOUR HEARING AID AND SMARTPHONE.....	20
Pairing your hearing aid with your smartphone via Bluetooth	20

Connecting the app to your hearing aid.....	20
Audio streaming with iPhone.....	20
How to use an Android smartphone with your hearing aid.....	21
How to use the hearing aid as a two-way headset for iPhone calls.....	21
How to turn off the Bluetooth connection.....	23
Compatibility with smartphones.....	23
CLEANING.....	24
Tools.....	24
How to clean your hearing aid.....	24
Replacing the microphone filters.....	26
The wax guard.....	27
ACCESSORIES.....	30
TROUBLESHOOTING.....	31
IMPORTANT SAFETY INFORMATION.....	34
REGULATORY INFORMATION.....	42
EU directives.....	42
Directive 2014/53/EU.....	42
Information regarding disposal.....	42
FCC and ISED statements.....	43
SYMBOLS.....	47
LICENSES AND ACKNOWLEDGEMENTS.....	49

Open-source acknowledgement.....	49
MIT license.....	50

YOUR HEARING AID

Welcome

Congratulations on your new hearing aid.

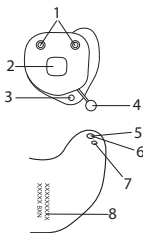
This hearing aid is powered by a rechargeable lithium-ion battery and must be used with the charger model WPT50x. The battery is built-in and you cannot replace this.

We recommend that you use your hearing aid regularly, even if it takes some time getting used to it. Infrequent users do not usually get the full benefit of a hearing aid.

NOTICE

Your hearing aid and its accessories may not look exactly as illustrated in this booklet. We also reserve the right to make any changes we consider necessary.

Your hearing aid at a glance



1. Microphone openings
2. Push button
3. Vent (optional)
4. Extraction cord (optional)
5. Sound outlet
6. Wax guard
7. Vent (optional)
8. Product information and Left/Right indication

The product information on the hearing aid indicates the side. “R” = Right ear. “L” = Left ear. In addition, the hearing aids are color coded for easy differentiation. Left hearing aid has a blue mark, and right hearing aid has a red mark. This color coding does not apply to black hearing aids, however.

Push button

Short press

Program change
To change the program, press the button on the hearing aid

Long press

No default setting.
Can be programmed in agreement with hearing care professional

Extra long press

Switch on/off
Press and hold the button on the hearing aid (one at a time), for a few seconds to turn off or to turn on your hearing aid.

CONDITIONS FOR USE

Indications for use

The hearing aids are indicated for individuals older than 36 months with a range of hearing loss from minimal (10 dB HL) to severe (95 dB HL) and all hearing loss configurations.

They are to be programmed by licensed hearing care professionals (audiologists, hearing aid specialists, otolaryngologists) who are trained in hearing (re)habilitation.

Hearing aids with rechargeable batteries

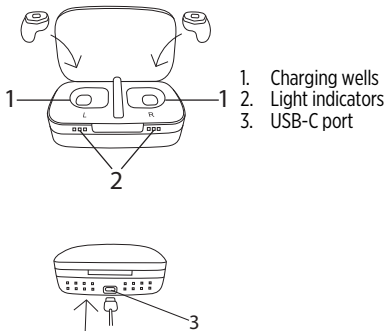
Hearing aids with rechargeable batteries should NOT be used by children younger than 36 months or mentally disabled people.

Intended purpose/Intended use

Hearing aids are intended to improve the hearing of hearing impaired persons. Diagnosis and prescription of a hearing instrument must be performed by hearing health specialists, e.g. acousticians, audiologists or ENT doctors.

Charging

We recommend that you charge your hearing aid daily. The following illustration represents your charger:



NOTICE

Hearing aids may get hot during charging

Due to the nature of charging technology, low level of heat is emitted, which increases the temperature of the charger and devices.

If you find that your hearing aids are too hot to the touch, wait until they have cooled before inserting them in your ears.

You may also do the following:

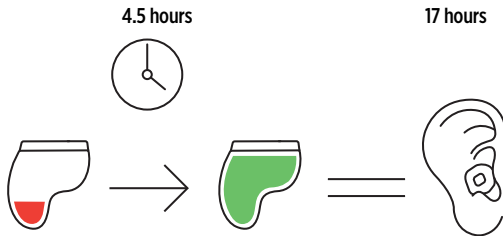
- Keep the lid open while charging.
- Keep the charger away from any heat source or direct sunlight.

For further information on how to charge your hearing aid, see the user instructions for the charger.

Use time and charging time

Charging your hearing aid fully will take approximately 4.5 hours.

When the hearing aid is fully charged, you can use it up to 17 hours in normal hearing environments before the next charge.



When you hear the battery alert indicating low power, you will have approximately 3-4 hours of normal use. The hearing aid turns off when the battery power is critically low.

Degree of hearing loss, sound environment and streaming are factors that affect the estimated use time. For example, if you use the streaming service, you will reduce the use time of the hearing aid.

Operating and charging conditions

Your hearing aid has been designed to operate in everyday situations, and it works in environmental conditions that are comfortable for you. You can wear your hearing aid during flights, but you should remove it before showering, swimming and sleeping.

Operating conditions

	Minimum	Maximum
Temperature	0 °C (32 °F)	50 °C (122 °F)
Humidity	5% rH	93% rH
Atmospheric pressure	700 mbar	1060 mbar

Charging conditions

	Minimum	Maximum
Temperature	10 °C (50 °F)	35 °C (95 °F)
Humidity	20% rH	75% rH

Long-term storage when not in use

If you plan to not wear your hearing aid for an extended period of time, fully charge it and store it in the case that came with the hearing aid. Remember to turn off the hearing aid before storing it.

Every 6 months you will have to charge the hearing aid to avoid an unrecoverable deep discharge of the battery. A deep discharged battery can no longer be charged and has to be replaced. We would however recommend recharging more frequently than every 6 months.

Storage and transport conditions

Your hearing aid is sensitive to extreme conditions such as high temperatures. It should not be stored or transported in direct sunlight, but only within the following conditions.

Storage conditions

	Minimum	Maximum
Temperature	10 °C (50 °F)	40 °C (104 °F)*
Humidity	10% rH	80% rH**

* Recommended temperature is 10°C to 25°C.

** Recommended humidity is 20 to 80% rH

Transport conditions

	Minimum	Maximum
Temperature	-20 °C (-4 °F)	60 °C (140 °F)
Humidity	5% rH	90% rH
Atmospheric pressure	700 mbar	1060 mbar

You can find technical data sheets on www.widexpro.com/documents and additional information on your hearing aids on www.widex.com.

DAILY USE

Turning the hearing aid on and off

You can turn the hearing aid on and off in two ways:

Charger method:

- on :** Remove the hearing aid from the charger and it turns on automatically.
- off :** Place the hearing aid in the charger and the hearing aid will shut off and the charging will begin.

Using the button:

- on :** Press and hold the button for 5 seconds.
- off :** Press and hold the button for 5 seconds.

Putting on and removing the hearing aid

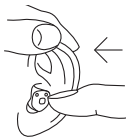
Putting on the hearing aid



CAUTION

Risk of injury!

- Make sure that the ear piece is completely attached.
- Insert the ear piece carefully and not too deeply into the ear.



Hold the hearing aid with your thumb and forefinger and insert it slowly into your ear until you feel resistance.

Twist it slightly until it sits well.

Then use the tip of your forefinger to gently push the hearing aid into your ear until it feels comfortable.

Pulling the outer ear upwards and backwards while you insert the hearing aid can be helpful.

Open and close your mouth to avoid accumulation of air in the ear canal.

Removing the hearing aid



Push lightly on the back of your ear to loosen the hearing aid.

Hold the hearing aid with your thumb and forefinger and pull carefully or if the hearing comes with it, use the extraction cord, to take the hearing aid out of your ear.

NOTICE

If you find it difficult to take out the hearing aid, move it carefully from side to side.

NOTICE

Clean and dry your hearing aids after use.

CUSTOMIZATION

Programs

This is an overview of programs that you can select from. Ask your hearing care professional for guidance.

PROGRAMS	USE
Universal	Automatic program with focus on optimum sound in all situations
PureSound	Automatic program with focus on natural and pleasant sound in all situations
Music	For listening to music
TV Program	This program is designed for listening to audio from TV. The TV program will automatically be created when pairing the hearing aids to a Widex TV Streamer

The names in the list of programs are the default names. Your hearing care professional can also select an alternative program name from a preselected list. Then it is even easier for you to select the right program in each listening situation.

Depending on your hearing loss, your hearing care professional can activate the Audibility Extender feature. Ask your hearing care professional if you could benefit from this.

If your needs and preferences change over time, your hearing care professional can easily change your program selection.

Sound and program adjustment

ALLURE app

You can connect your smartphone to your ALLURE hearing aid with the ALLURE app to stream sound and control the functions of the hearing aid. For example, you can personalize your listening experience, change programs, and adjust or mute the sound in your hearing aid.

For a list of compatible smartphones, please visit:

www.widex.com/support/compatibility/.

Remote control

If you have a remote control, you can also change program or adjust the sound manually to achieve more comfort or more audibility, depending on your needs and preferences. For more information on how this works, consult your hearing care professional.

PAIRING YOUR HEARING AID AND SMARTPHONE

Pairing your hearing aid with your smartphone via Bluetooth

To pair your hearing aid and smartphone you need to restart your hearing aid. Do as follows:

1. Restart your hearing aid.
2. Keep the hearing aid close to your phone and follow the instructions in the ALLURE app.
3. The hearing aid and smartphone are now ready for use.

NOTICE

Your hearing aid is only in pairing mode for three minutes after you restart it. You might need to restart it again if you do not pair it in time.

Connecting the app to your hearing aid

When you have paired your hearing aid with your smartphone (in the settings menu), open the ALLURE app and it automatically connects to the hearing aid.

Audio streaming with iPhone

Your hearing aids are Made for iPhone hearing aids. This means you can get phone calls and listen to music from your iPhone directly into your hearing aids. Additionally, your hearing aids may offer hands-free calling with compatible iPhone and iPad devices.

For more information about compatible iOS devices, pairing, audio streaming and other useful functions, contact your hearing care professional.

How to use an Android smartphone with your hearing aid

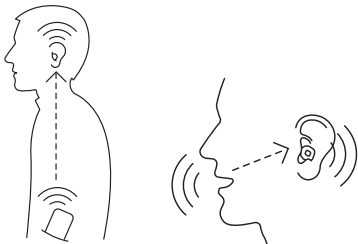


If your hearing aid is paired with your Android smartphone via Bluetooth, your phone will send sound data directly to your hearing aid during phone calls.

During a call, hold your Android smartphone in front of you so the microphone on the phone is close to your mouth. This is how you experience the best sound quality.

How to use the hearing aid as a two-way headset for iPhone calls

If your hearing aid is paired with your iPhone via Bluetooth, it can receive and transmit voice data during phone calls. Your iPhone will send sound data directly to your hearing aid. Your hearing aid will pick up your voice and transmit it back to the iPhone. This lets you enjoy hands-free calls while on the go.



Your hearing aid automatically functions as a two-way headset when it is paired with your iPhone. You can make phone calls without having to speak into the phone itself.

Your hearing aid lets you accept incoming calls without interacting with your phone directly, and to end the call when it is over. To use this functionality, do the following:

1. Press the push button on your hearing aid to pick up an incoming call.
2. Press the push button on your hearing aid to end the call.

You may also accept incoming calls and end calls by using the app directly on your phone.

Consult the manual for the ALLURE app to learn more about the app's features.

How to turn off the Bluetooth connection

Go to the More menu in the ALLURE app and select “Hearing aid Bluetooth” to turn off the Bluetooth connection. Bluetooth will reconnect once the hearing aid has been restarted.

Compatibility with smartphones

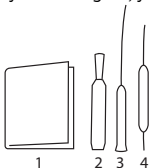
You can see a list of compatible smartphones, tablets, etc. at this website:

www.widex.com/support/compatibility/

CLEANING

Tools

With your hearing aid, you will receive the following cleaning tools:



1. Cloth
2. Brush for ear-set
3. Long wax-removing tool for ear-set
4. Short wax-removing tool for ear-set

How to clean your hearing aid

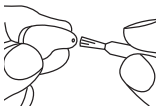
Cleaning your hearing aid every day will make it more effective and more comfortable to wear.



Wipe the hearing aid off with a soft, dry cloth.
If the microphone grid is blocked, contact your hearing care professional.
If you notice dirt on the microphone covers, gently blow it away or wipe it off with a soft cloth.

Dry your hearing aid quickly if it gets wet, or if you perspire heavily.

The sound outlet



Remove any visible earwax from **around** the sound outlet with the small brush or cloth. **Never** try to clean the wax guard.

NOTICE

If you cannot clean the sound outlet, contact your hearing care professional. **Never** insert anything into the sound outlet as this can ruin your hearing aid.

The vent

Hearing aids including vents:

Clean the vents every day by passing the long wax removing tool (no. 3) all the way through the vent.

NOTICE

It is important for the performance of your hearing aid that you keep the vent clean and free of earwax, dirt and the like. Clean it every day after use and consult your hearing care professional if the vent is blocked.

Dry your hearing aid quickly if it gets wet, or if you perspire heavily. Some people use a special dehumidifier like Widex PerfectDry Lux to help keep their hearing aids dry and clean. Ask your hearing care professional if this is right for you.



Do not use any kind of liquid or disinfectant to clean your hearing aid.



Clean and inspect your hearing aid every day after use to check that it is not broken. If the hearing aid breaks while you are wearing it, leaving small fragments in your ear canal, contact your doctor. Never try to take out the fragments yourself.

Replacing the microphone filters



The microphone filters help to protect the hearing aid microphones against dirt and earwax.

In case the microphone filters need to be replaced, this should be done by a professional.

Ask your hearing care professional, how often you should replace the microphone filters.



The filters are for one-time use only and are not intended to be cleaned.



If the filter fits loosely, discard it and use a new one.

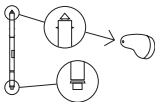
The wax guard

The wax guard helps to protect the hearing aid against earwax. Always use wax guards supplied by Widex with your hearing aid.

Changing the wax guard

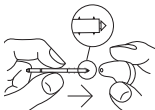


Open the wax guard case as illustrated.

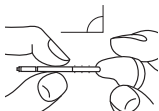


The wax guard consists of the following parts:

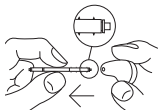
1. Removal hook
2. New wax guard



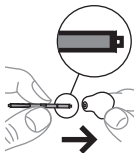
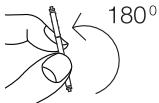
Insert the removal hook into the used wax guard.



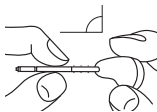
Keep the holder at a right angle.



Pull the used wax guard straight out.



Insert the new wax guard into the opening of the sound outlet and press it gently.



Pull the holder straight out.



Ask your hearing care professional about how often you should change the wax guard.



The wax guard is for one-time use only and is not intended to be cleaned.



If the wax guard fits loosely, discard it and use a new one.



If the wax guard falls off inside your ear, contact your doctor or hearing care professional to have it removed. Do NOT attempt to remove the wax guard yourself.

ACCESSORIES

You can use a variety of accessories with your hearing aid. Ask your hearing care professional if you could benefit from using these accessories.

Name	Use
RC-DEX	Remote control
TVPLAY 2	for direct TV streaming
WPT50x	Charger for the ACRD1 hearing aid
ALLURE APP	for using your smartphone to control your hearing aids

TROUBLESHOOTING

These pages contain advice on what to do if your hearing aid stops working or if it doesn't work as expected. If the problem persists, contact your hearing care professional.

Problem	Possible cause	Solution
The hearing aid is completely silent	It is not turned on	Check that the hearing aid is turned on. You can manually turn the hearing aid on (see instructions).
	The hearing aid is not charged	Charge the hearing aid in the charger
	The sound outlet is blocked	See the cleaning section
	The microphone opening is blocked	See the cleaning section
The hearing aid volume is not powerful enough	The sound outlet is blocked	See the cleaning section
	Your ear is blocked by earwax	Contact your doctor
	Your hearing may have changed	Contact your hearing care professional/doctor

Problem	Possible cause	Solution
The hearing aid whistles continuously	Your ear is blocked by earwax	Contact your doctor
	It is not correctly placed in your ear canal	Take it out and reinsert it
	It fits loosely in your ear canal	Contact your hearing care professional
The hearing aid is uncomfortable to wear	It is not correctly placed in your ear canal.	Consult your hearing care professional
	It does not fit your ear properly	Contact your hearing care professional
	Your outer ear or ear canal is sore	It is important that first-time users only wear the hearing aid for short periods of time at the beginning. Take 2-3 weeks to gradually get used to the hearing aid. If the soreness continues, contact your hearing care professional

Problem	Possible cause	Solution
Your hearing aids are not working in synchrony	The connection between the hearing aids is lost	Turn them off and on again
The hearing aids do not respond with a corresponding change in volume or program to the device	The device is used beyond the transmission range	Move the device closer to the hearing aids
	Strong electromagnetic interference in the vicinity	Move away from known source of EM interference
	The device and the hearing aids are not matched	Check with your hearing care professional to make sure device is matched with the hearing aids
You hear “interrupted” speech (on and off) from the hearing aids or no speech (muted) from the opposite hearing aid.	Strong electromagnetic interference in the vicinity	Move away from known sources of interference

IMPORTANT SAFETY INFORMATION

Read these pages carefully before you begin using your hearing aid.



WARNING

Risk of injury, fire or explosion!

A power cell (lithium-ion rechargeable battery) is permanently built into your hearing aids.

- Incorrect use of the hearing aids can cause the power cell to burst.



WARNING

- Observe the operating conditions.
- Pay special attention to protect your device from extreme heat (e.g. fire, microwave oven, induction oven or other high induction fields) and sunlight.
- Charge your hearing aids only with the approved charger. Ask your hearing care professional for support.
- Do not disassemble the device.
- Do not use the device in explosive atmospheres.
- Do not use devices that are deformed or obviously damaged.
- Do not use the device when its performance after charging reduces considerably. Return the device to your hearing care professional.
- Do not dispose of the device in fire or water.

**WARNING**

Replacement and repair have to be performed by a professional. Therefore:

- Do not use the hearing instruments when their performance after charging reduces considerably.
 - Do not repair or replace the lithium-ion rechargeable battery yourself.
 - In the unlikely event of a lithium-ion rechargeable battery bursting or exploding, keep all combustible materials away.
- In any of the above cases, return your device to the hearing care professional.

**WARNING**

Risk of injury, fire or explosion!

Ship lithium batteries and hearing aids according to local regulations.

**WARNING**

If you know you have any contact allergies, ask the manufacturer of the hearing aids about potential allergens before you start using the hearing aids. If you get an allergic reaction from wearing the hearing aids, stop using them, and talk to a licensed physician.

**WARNING****Choking and poisoning hazard**

Hearing aids and batteries are small enough to be swallowed. Swallowing a battery or any part of a hearing aid can be hazardous to health and may result in severe or fatal injury.

To minimize the risk of anyone swallowing a battery or any part of a hearing aid, take the following precautions:

- Keep hearing aids, batteries and accessories out of reach of children, pets, and cognitively impaired people.
- If parts have been swallowed consult a physician or hospital immediately.
- Store hearing aids and batteries in a secure place when they are not in use.
- Do not store hearing aids and batteries in places where they might be mistaken for edible objects like pills and candy.

If a battery or any part of a hearing aid is swallowed, seek immediate medical attention.

**WARNING****Risk of impairing the residual hearing of the user.**

Only use hearing aids that have been specifically fitted to your needs.

**WARNING****Risk of explosion!**

Do not use your hearing aids in explosive atmospheres (e.g. mining areas).



WARNING
Risk of injury!

Do not use or repair obviously damaged devices. Return them to the point of sale.



WARNING
Choking hazard posed by small parts.

This hearing aid is not intended for the fitting of infants, children under 3 years and cognitively impaired people.



WARNING
Risk of impairing the residual hearing of the user.

For hearing aids with an output sound pressure level of 132 dB SPL or more.

- Take special care when fitting this instrument.



WARNING
Take your hearing aids out when you are not using them. This will help to ventilate the ear canal and prevent ear infections.



WARNING
Streaming sound to your hearing aids at a high volume can prevent you from hearing other important sounds such as alarms and traffic noise. In such situations make sure to keep the volume of the streamed sound at a suitable level.

**WARNING****Risk of affecting electronic equipment!**

In areas where the use of electronics or wireless devices are restricted, find out if your device has to be turned off.

**WARNING**

Any unauthorized changes to the product may cause damage to the product or cause injury.

- Use only approved parts and accessories. Ask your hearing care professional for support.
- Do not modify this product without authorization from the manufacturer.
- If this equipment is modified, appropriate inspection and testing must be conducted to ensure safe use of the product.

**WARNING**

A Hearing Care Professional should advise a prospective hearing aid user to consult a licensed physician before using the hearing aid if the hearing care professional determines that the prospective user has any of the following conditions:

- Visible congenital or traumatic deformity of the ear.
- History of active drainage from the ear within the previous 90 days.
- History of sudden or rapidly progressive hearing loss within the previous 90 days.
- Acute or chronic dizziness.
- Sudden or recent unilateral hearing loss within the previous 90 days.
- Audiometric air-bone gap equal to or greater than 15 decibels at 500 hertz (Hz), 1,000 Hz, and 2,000 Hz.
- Visible evidence of significant cerumen accumulation or a foreign body in the ear canal.
- Pain or discomfort in the ear, for example due to a recent or current ear infection.

**WARNING**

Consult a hearing care professional if you experience any unusual side effects such as skin irritation, excessive earwax buildup, dizziness, a change in your hearing, or if you suspect something is stuck in your ear canal.



WARNING

Keep batteries out of reach of children.

- Swallowing or inserting a coin battery into any part of the body can result in severe or fatal injury within two hours.

- If you suspect your child has swallowed or inserted a battery, call your local poison control hotline immediately.

For Australia, call the Poisons Information Centre at 13 11 26.

For New Zealand, call the National Poisons Centre at 0800 764 766.

For Canada, contact the poison center for your province. The phone number can be found at <https://infopoison.ca>.

- Examine devices to make sure battery compartments are correctly secured, and that screws and other mechanical fasteners are tightened.

Do not use a device if its battery compartment is not secure.

- Dispose of used batteries immediately and safely. Used and discharged batteries can still be dangerous.

- Tell others about the risk associated with batteries and how to keep their children safe.



CAUTION

When not in use, please store your hearing aids in the jewel case/ charging case (if applicable) or any other appropriate storage solution and keep out of the reach of children.

NOTICE

- Protect your hearing aids from extreme heat. Do not store them in direct sunlight.
- Protect your hearing aids from high humidity. Do not wear them in the shower or when you apply make-up, perfume, aftershave, hairspray or suntan lotion.
- Do not dry your hearing aids in the microwave oven.
- Different types of strong radiation, e.g. during X-ray, MRI procedures, proximity of idle MRI or CT scan, may damage hearing aids. Do not wear the hearing aids during these or similar procedures like electrosurgery (diathermy, electrocautery, HF-surgery).
- Your hearing aids are designed to comply with international standards on electromagnetic compatibility, but interference from nearby electronic devices like induction cookers, electromagnetic security systems, anti-theft systems, metal detectors, mobile phones, RFID, and surveillance systems could occur. In this case, move away from the source of interference.

If you encounter unwanted noise in the vicinity of such device, you should increase the distance between the hearing aid and that device.

- Your hearing aids are designed to comply with international standards on electromagnetic compatibility but interference with nearby electronic devices could occur. In this case, move away from the source of interference.
- Recycle hearing aids, accessories and packaging according to local regulations.
- To avoid environmental pollution, do not throw batteries into household trash. Recycle or dispose of batteries according to local regulations or return device to your hearing care professional.
- In case of a serious incident, report the occurrence to the manufacturer of the device and the competent authority under whose jurisdiction the user and/or patient is established resides.

REGULATORY INFORMATION

EU directives

Directive 2014/53/EU

WSAUD A/S hereby declares that this ACRD1 is in compliance with the essential requirements and other relevant provisions of Directive 2014/53/EU.

The ACRD1 contains radio transmitters operating at:
10.6 MHz, -54 dBμA/m @10 m, 2.4 GHz, 0.9 mW EIRP.

A copy of the Declaration of Conformity according to 2014/53/EU can be found at:

www.widex.com/doc

To avoid potential degradation of radio performance, your device should be separated by at least 25 cm (10 inches) from other radio communications equipment.



Information regarding disposal

Do not dispose of hearing aids, hearing aid accessories and batteries along with ordinary household waste.

Hearing aids, batteries and hearing aid accessories should be disposed of at sites intended for electrical waste and electronic equipment, or given to your hearing care professional for safe disposal.

FCC and ISED statements

Contains FCC ID: 2AXDT-RFM016

Contains IC: 26428-RFM016

HVIN: RFM016

Federal Communications Commission Statement

This device complies with part 15 of the FCC Rules. Operation is subject to the following two conditions:

- (1) This device may not cause harmful interference, and
- (2) this device must accept any interference received, including interference that may cause undesired operation.

NOTE:

This equipment has been tested and found to comply with the limits for a Class B digital device, pursuant to part 15 of the FCC Rules. These limits are designed to provide reasonable protection against harmful interference in a residential installation. This equipment generates, uses and can radiate radio frequency energy and, if not installed and used in accordance with

the instructions, may cause harmful interference to radio communications. However, there is no guarantee that interference will not occur in a particular installation.

If this equipment does cause harmful interference to radio or television reception, which can be determined by turning the equipment off and on, the user is encouraged to try to correct the interference by one or more of the following measures:

- Reorient or relocate the receiving antenna.
- Increase the separation between the equipment and receiver.
- Connect the equipment into an outlet on a circuit different from that to which the receiver is connected.
- Consult the dealer or an experienced radio/TV technician for help.

NOTE:

This equipment complies with FCC radiation exposure limits set forth for an uncontrolled environment. This transmitter must not be co-located or operating in conjunction with any other antenna or transmitter.

Changes or modifications to the equipment not expressly approved by the party responsible for compliance could void the user's authority to operate the equipment.

ISED Statement / Déclaration d'ISED

This device contains licence-exempt transmitter(s)/receiver(s) that comply with Innovation, Science and Economic Development Canada's licence-exempt RSS(s). Operation is subject to the following two conditions:

- (1) This device may not cause interference.
- (2) This device must accept any interference, including interference that may cause undesired operation of the device.

L'émetteur/récepteur exempt de licence contenu dans le présent appareil est conforme aux CNR d'Innovation, Sciences et Développement économique Canada applicables aux appareils radio exempts de licence. L'exploitation est autorisée aux deux conditions suivantes:

- (1) L'appareil ne doit pas produire de brouillage;
- (2) L'appareil doit accepter tout brouillage radioélectrique subi, même si le brouillage est susceptible d'en compromettre le fonctionnement.

ISED RADIATION EXPOSURE STATEMENT:

This equipment complies with ISED RF radiation exposure limits set forth for an uncontrolled environment. This transmitter must not be co-located or operating in conjunction with any other antenna or transmitter.

To comply with ISED RF exposure requirements, the device must be operated at a minimum distance of 20 cm or more from a person's body.

ISED EXPOSITION AUX RADIATIONS:

Cet équipement est conforme aux limites d'exposition aux rayonnements ISED établies pour un environnement non contrôlé. Cet émetteur ne doit pas être situé au même endroit ou fonctionner en conjonction avec une autre antenne ou un autre transmetteur.

Pour se conformer aux exigences d'exposition aux radiofréquences d'ISED, l'appareil doit être utilisé à une distance minimale de 20 cm ou plus du corps d'une personne.

SYMBOLS

Symbols commonly used by WIDEX in medical device labelling (labels/IFU/etc.).

Symbol	Title/Description
--------	-------------------



Manufacturer

The product is produced by the manufacturer whose name and address are stated next to the symbol. If appropriate, the date of manufacture may also be stated.



Catalogue number

The product's catalogue (item) number.
--



Consult instructions for use

The user instructions contain important cautionary information (warnings/precautions) and must be read before using the product.
--



Keep dry during transportation and storage.



Packaging can be recycled.



Date of manufacture symbol.



Serial number symbol.

Symbol	Title/Description
--------	-------------------

**Warning**

Text marked with a warning symbol must be read before using the product.

**WEEE mark**

“Not for general waste”. When a product is to be discarded, it must be sent to a designated collection point for recycling and recovering to prevent the risk of harm to the environment or human health as a result of the presence of hazardous substances.

**CE mark**

The product is in conformity with the requirements set out in European CE marking directives.

**RCM mark**

The product complies with electrical safety, EMC and radio spectrum regulatory requirements for products supplied to the Australian or New Zealand markets.

**Medical device**

Indication that the device is a medical device.

LICENSES AND ACKNOWLEDGEMENTS

Open-source acknowledgement

This device makes use of a third-party open-source software resource. The open-source resource is listed below, followed by the full text of its license.

scmRTOS

Copyright (c) 2003-2015, scmRTOS Team

scmrto/LICENSE at master · scmrto/scmrto · GitHub

Licensed under the MIT license

cJSON

Copyright (c) 2009-2017, Dave Gamble and cJSON contributors

cJSON/LICENSE at master · cJSON/cJSON · GitHub

Licensed under the MIT license

MIT license

Permission is hereby granted, free of charge, to any person obtaining a copy of this software and associated documentation files (the "Software"), to deal in the Software without restriction, including without limitation the rights to use, copy, modify, merge, publish, distribute, sublicense, and/or sell copies of the Software, and to permit persons to whom the Software is furnished to do so, subject to the following conditions:

The above copyright notice and this permission notice shall be included in all copies or substantial portions of the Software.

THE SOFTWARE IS PROVIDED "AS IS", WITHOUT WARRANTY OF ANY KIND, EXPRESS OR IMPLIED, INCLUDING BUT NOT LIMITED TO THE WARRANTIES OF MERCHANTABILITY, FITNESS FOR A PARTICULAR PURPOSE AND NONINFRINGEMENT. IN NO EVENT SHALL THE AUTHORS OR COPYRIGHT HOLDERS BE LIABLE FOR ANY CLAIM, DAMAGES OR OTHER LIABILITY, WHETHER IN AN ACTION OF CONTRACT, TORT OR OTHERWISE, ARISING FROM, OUT OF OR IN CONNECTION WITH THE SOFTWARE OR THE USE OR OTHER DEALINGS IN THE SOFTWARE.



WSAUD A/S

Nymoellevej 6, DK-3540 Lynge, Denmark
www.widex.com



Manual no.:
9 514 1217 001 01
Issue:
2025-09

